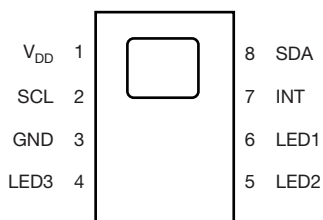




High Resolution Digital Biosensor for Wearable Applications With I²C Interface



DESCRIPTION

VCNL3036 integrates a biosensor (BIO), a mux, and a driver for up to 3 external IREDS / LEDs into one small package. It incorporates photodiodes, amplifiers, and analog to digital converting circuits into a single chip by CMOS process. BIO programmable interrupt features of individual high and low thresholds offers the best utilization of resource and power saving on the microcontroller.

The biosensor features an intelligent cancellation scheme, so that cross talk phenomenon is eliminated effectively. To accelerate the BIO response time, smart persistence prevents the misjudgment of proximity sensing but also keeps a fast response time. Active force mode, one time trigger by one instruction, is another good approach for more design flexibility to fulfill different kinds of applications with more power saving.

VCNL3036 provides an excellent temperature compensation capability for keeping output stable under various temperature configurations. BIO functions are easily operated via the simple command format of I²C (SMBus compatible) interface protocol. Operating voltage ranges from 2.5 V to 3.6 V. VCNL3036 is packaged in a lead (Pb)-free 8-pin QFN package, which offers the best market-proven reliability quality.

FEATURES

- Package type: surface-mount
- Dimensions (L x W x H in mm): 4.0 x 2.36 x 0.75
- Integrated modules: biosensor (BIO), photo diode (PD), and signal conditioning IC
- Temperature compensation: -25 °C to +85 °C
- Low power consumption I²C (SMBus compatible) interface
- Output type: I²C bus
- Operation voltage: 2.5 V to 3.6 V
- Floor life: 168 h, MSL 3, according to J-STD-020
- Material categorization: for definitions of compliance please see www.vishay.com/doc?99912



OPTICAL BIOSENSORS FUNCTION

- Broader sensitivity photodiode allows to also work with green and red LED
- Programmable LED sink current
- Intelligent cancellation to reduce cross talk phenomenon
- Smart persistence scheme to reduce response time
- Selectable for 12-bit / 16-bit BIO output data

INTERRUPT

- Programmable interrupt function for BIO with upper and lower thresholds
- Adjustable persistence to prevent false triggers

APPLICATIONS

- Handheld device
- Wearable devices
- Consumer device
- Fitness and medical monitoring applications

PRODUCT SUMMARY

| PART NUMBER | OPERATING VOLTAGE RANGE (V) | I ² C BUS VOLTAGE RANGE (V) | LED PULSE CURRENT ⁽¹⁾ (mA) | SPECTRAL BANDWIDTH RANGE λ _{0.5} (nm) | OUTPUT CODE | ADC RESOLUTION BIOSENSOR |
|-------------|-----------------------------|--|---------------------------------------|--|--------------------------|--------------------------|
| VCNL3036 | 2.5 to 3.6 | 1.8 to 5.5 | 200 | 500 to 910 | 16 bit, I ² C | 16 bit |

Notes

⁽¹⁾ Adjustable through I²C interface



| ORDERING INFORMATION | | | |
|----------------------|---------------|-----------------------|----------------------------|
| ORDERING CODE | PACKAGING | VOLUME ⁽¹⁾ | REMARKS |
| VCNL3036-GS08 | Tape and reel | MOQ: 3300 pcs | 4.0 mm x 2.36 mm x 0.75 mm |
| VCNL3036-GS18 | | MOQ: 13 000 pcs | |

Note

(1) MOQ: minimum order quantity

| ABSOLUTE MAXIMUM RATINGS ($T_{amb} = 25\text{ }^{\circ}\text{C}$, unless otherwise specified) | | | | | |
|---|----------------|-----------|------|------|--------------------|
| PARAMETER | TEST CONDITION | SYMBOL | MIN. | MAX. | UNIT |
| Supply voltage | | V_{DD} | 2.5 | 3.6 | V |
| Operation temperature range | | T_{amb} | -25 | +85 | $^{\circ}\text{C}$ |
| Storage temperature range | | T_{stg} | -25 | +85 | $^{\circ}\text{C}$ |

| RECOMMENDED OPERATING CONDITIONS ($T_{amb} = 25\text{ }^{\circ}\text{C}$, unless otherwise specified) | | | | | |
|---|----------------|----------------|------|------|--------------------|
| PARAMETER | TEST CONDITION | SYMBOL | MIN. | MAX. | UNIT |
| Supply voltage | | V_{DD} | 2.5 | 3.6 | V |
| Operation temperature range | | T_{amb} | -25 | +85 | $^{\circ}\text{C}$ |
| I ² C bus operating frequency | | $f_{(I2CCLK)}$ | 10 | 400 | kHz |

| PIN DESCRIPTIONS | | | |
|------------------|----------|--------------------|---|
| PIN ASSIGNMENT | SYMBOL | TYPE | FUNCTION |
| 1 | V_{DD} | - | Power supply input |
| 2 | SCL | I | I ² C digital bus clock input |
| 3 | GND | - | Ground |
| 4 | LED3 | I | Cathode (LED3) connection |
| 5 | LED2 | I | Cathode (LED2) connection |
| 6 | LED1 | I | Cathode (LED1) connection |
| 7 | INT | O | Interrupt pin |
| 8 | SDA | I / O (open drain) | I ² C data bus data input / output |

| BASIC CHARACTERISTICS ($T_{amb} = 25\text{ }^{\circ}\text{C}$, unless otherwise specified) | | | | | | |
|--|---|-------------------------|----------|------|---------------|--------------------|
| PARAMETER | TEST CONDITION | SYMBOL | MIN. | TYP. | MAX. | UNIT |
| Supply voltage | | V_{DD} | 2.5 | - | 3.6 | V |
| Supply current | Excluded LED driving | I_{DD} | - | 300 | - | μA |
| | Light condition = dark, $V_{DD} = 3.3\text{ V}$ | $I_{DD}(\text{SD})$ | - | 0.2 | - | μA |
| I ² C supply voltage | | $V_{PULL\ UP}$ | 1.8 | - | 5.5 | V |
| PS enable | | I_{PSSD} | - | 200 | - | μA |
| I ² C signal input | Logic high | $V_{DD} = 3.3\text{ V}$ | V_{IH} | 1.55 | - | V |
| | Logic low | | V_{IL} | - | 0.4 | |
| | Logic high | $V_{DD} = 2.6\text{ V}$ | V_{IH} | 1.4 | - | V |
| | Logic low | | V_{IL} | - | 0.4 | |
| Full BIO counts | 12-bit / 16-bit resolution | | - | - | 4096 / 65 535 | steps |
| PS detection range | Kodak gray card ⁽¹⁾ | | 0 | - | 500 | mm |
| Operating temperature range | | T_{amb} | -25 | - | +85 | $^{\circ}\text{C}$ |
| LED_Anode voltage | | | - | - | 5.5 | V |
| LED driving current | | | - | - | 200 | mA |

Note

(1) Depending on external LED



| I ² C BUS TIMING CHARACTERISTICS (T _{amb} = 25 °C, unless otherwise specified) | | | | | | |
|--|-----------|---------------|------|-----------|------|------|
| PARAMETER | SYMBOL | STANDARD MODE | | FAST MODE | | UNIT |
| | | MIN. | MAX. | MIN. | MAX. | |
| Clock frequency | f(SMBCLK) | 10 | 100 | 10 | 400 | kHz |
| Bus free time between start and stop condition | t(BUF) | 4.7 | - | 1.3 | - | µs |
| Hold time after (repeated) start condition; after this period, the first clock is generated | t(HDSTA) | 4.0 | - | 0.6 | - | µs |
| Repeated start condition setup time | t(SUSTA) | 4.7 | - | 0.6 | - | µs |
| Stop condition setup time | t(SUSTO) | 4.0 | - | 0.6 | - | µs |
| Data hold time | t(HDDAT) | - | 3450 | - | 900 | ns |
| Data setup time | t(SUDAT) | 250 | - | 100 | - | ns |
| I ² C clock (SCK) low period | t(LOW) | 4.7 | - | 1.3 | - | µs |
| I ² C clock (SCK) high period | t(HIGH) | 4.0 | - | 0.6 | - | µs |
| Clock / data fall time | t(F) | - | 300 | - | 300 | ns |
| Clock / data rise time | t(R) | - | 1000 | - | 300 | ns |

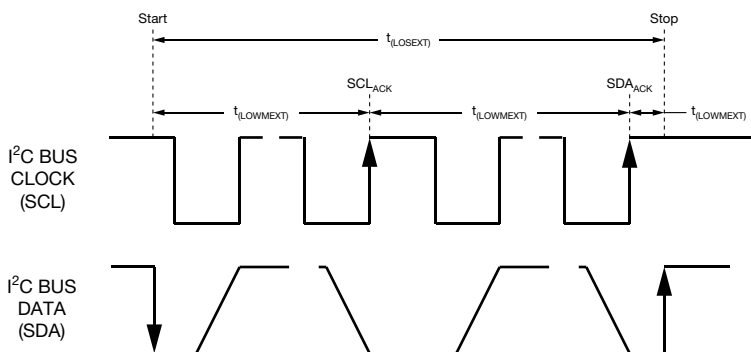
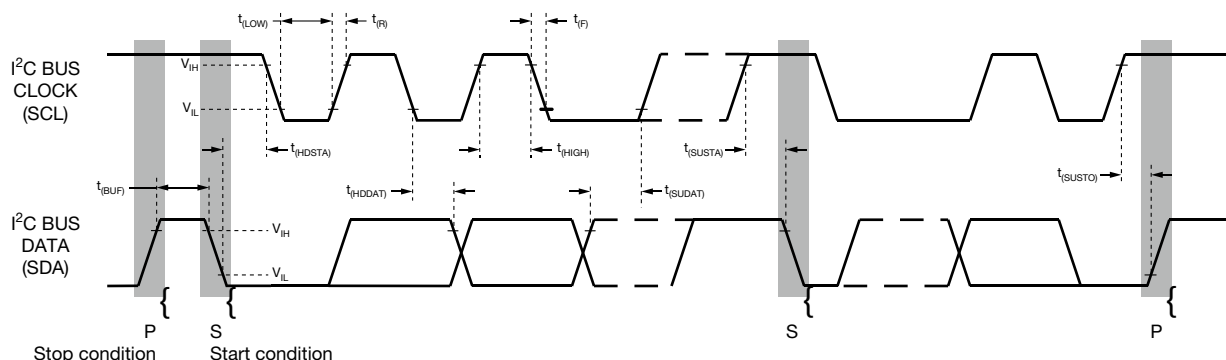


Fig. 1 - I²C Bus Timing Diagram



PARAMETER TIMING INFORMATION

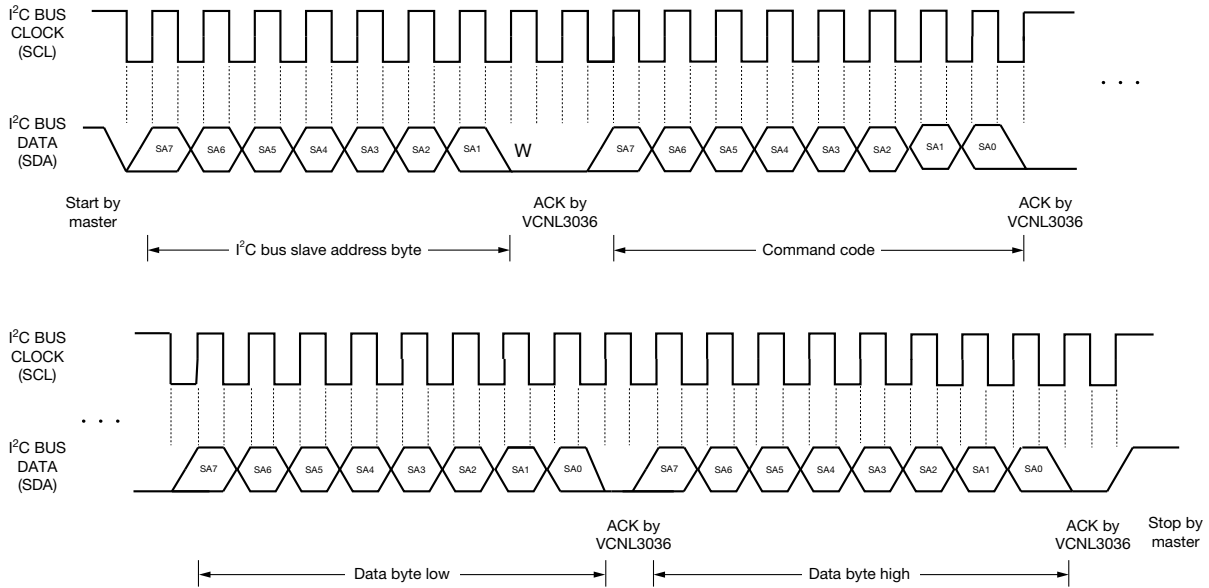


Fig. 2 - I²C Bus Timing for Sending Word Command Format

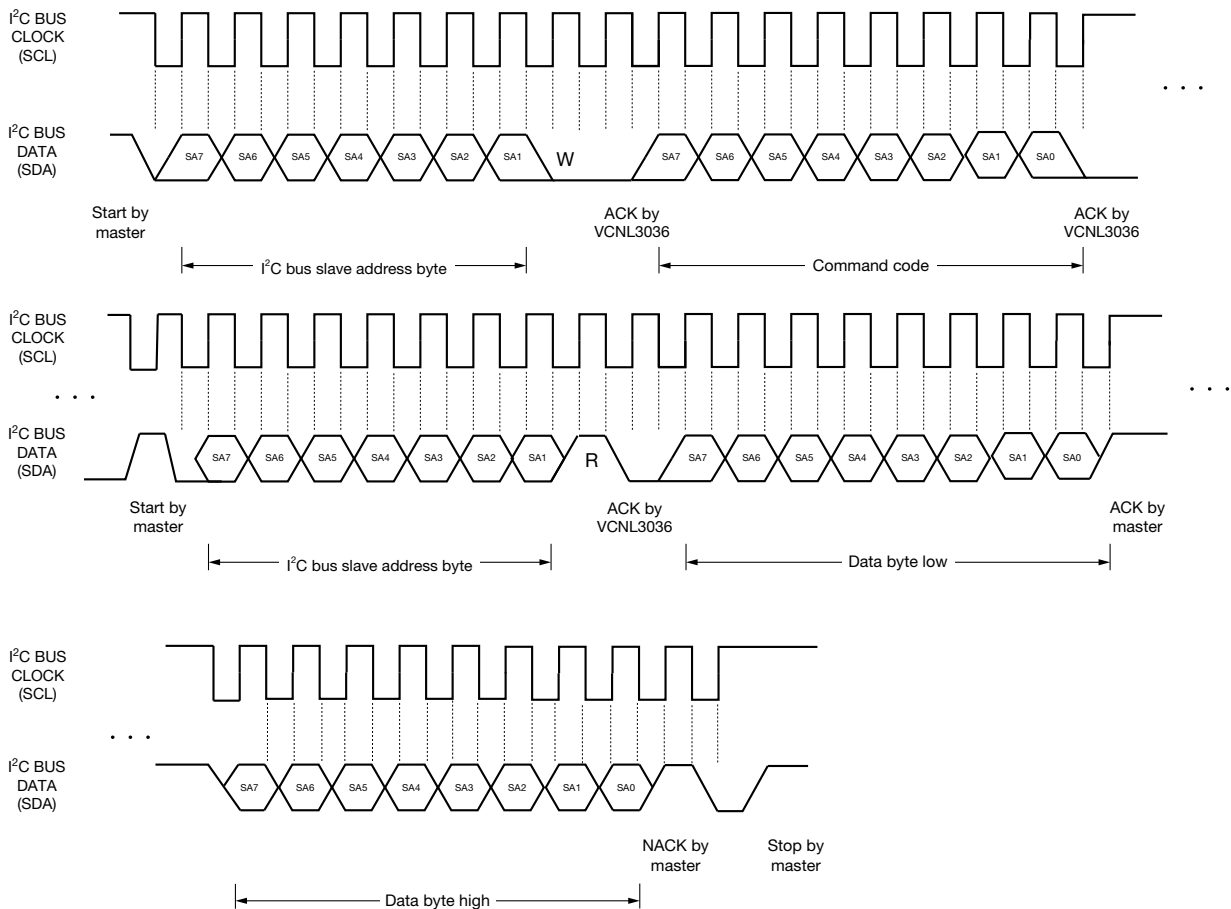


Fig. 3 - I²C Bus Timing for Receiving Word Command Format



TYPICAL PERFORMANCE CHARACTERISTICS ($T_{amb} = 25\text{ }^{\circ}\text{C}$, unless otherwise specified)

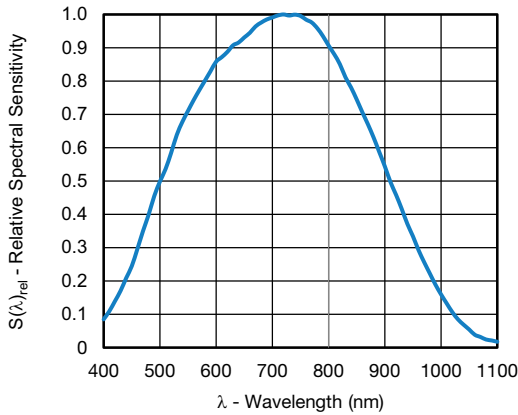


Fig. 4 - Relative Spectral Sensitivity vs. Wavelength (biosensor)

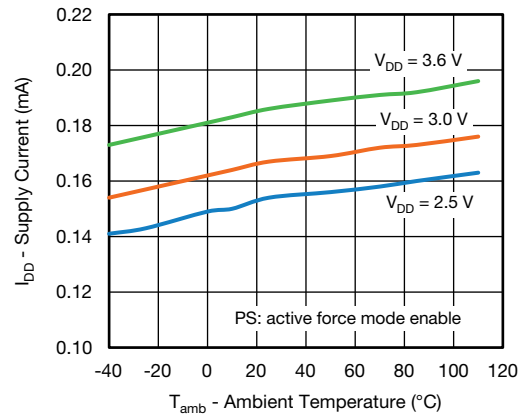


Fig. 5 - Supply Current vs. Ambient Temperature

APPLICATION INFORMATION

Pin Connection with the Host

VCNL3036 integrates biosensor and an LED driver with three inputs for external LEDs / IREDs all together with I²C interface. It is very easy for the baseband (CPU) to access PS output data via I²C interface without extra software algorithms. The hardware schematic is shown in the following diagram.

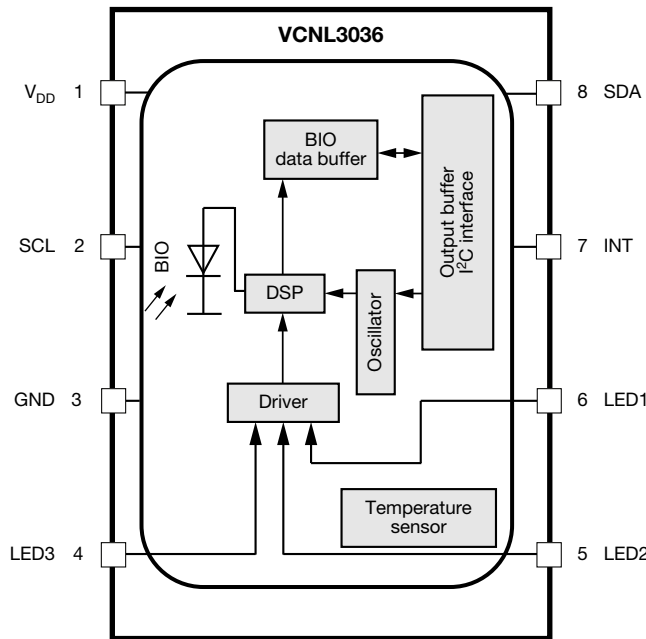


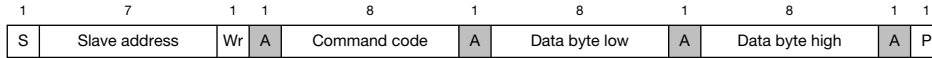
Fig. 6 - Detailed Block Diagram



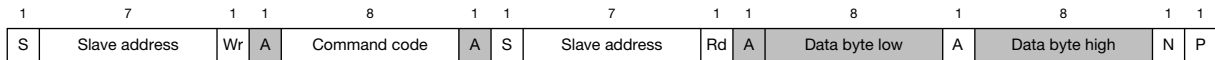
Digital Interface

VCNL3036 applies single slave address 0x41 (HEX) of 7-bit addressing following I²C protocol. All operations can be controlled by the command register. The simple command structure helps users easily program the operation setting and latch the light data from VCNL3036. As Fig. 10 shows, VCNL3036's I²C command format is simple for read and write operations between VCNL3036 and the host. The white sections indicate host activity and the gray sections indicate VCNL3036's acknowledgement of the host access activity. Write word and read word protocol is suitable for accessing registers particularly for 12-bit / 16-bit PS data. Interrupt can be cleared by reading data out from register: INT_Flag. All command codes should follow read word and write word protocols.

Send Byte → Write Command to VCNL3036



Receive Byte → Read Data from VCNL3036



S = start condition
 P = stop condition
 A = acknowledge
 N = no acknowledge
 Shaded area = VCNL3036 acknowledge

Fig. 7 - Write Word and Read Word Protocol



Function Description

For proximity sensor function, VCNL3036 supports different kinds of mechanical designs to achieve the best proximity detection performance for any color of object with more flexibility. The basic PS function settings, such as duty ratio, integration time, interrupt, and PS enable / disable, and persistence, are handled by the register: PS_CONF1. Duty ratio controls the PS response time. Integration time represents the duration of the energy being received. The interrupt is asserted when the PS detection levels over the high threshold level setting (register: PS_THDH) or lower than low threshold (register: PS_THDL). If the interrupt function is enabled, the host reads the PS output data from VCNL3036 that saves host loading from periodically reading PS data. More than that, INT flag (register: INT_Flag) indicates the behavior of INT triggered under different conditions. PS persistence (PS_PERS) sets up the PS INT asserted conditions as long as the PS output value continually exceeds the threshold level. The intelligent cancellation level can be set on register: PS_CANC to reduce the cross talk phenomenon.

VCNL3036 also supports an easy use of proximity detection logic output mode that outputs just high / low levels saving loading from the host. Normal operation mode or proximity detection logic output mode can be selected on the register: PS_MS. A smart persistence is provided to get faster PS response time and prevent false trigger for PS. Descriptions of each slave address operation are shown in table 1.

| TABLE 1 - COMMAND CODE AND REGISTER DESCRIPTION | | | | | |
|---|----------------------|---------------|-------|---------------|---|
| COMMAND CODE | DATE BYTE LOW / HIGH | REGISTER NAME | R / W | DEFAULT VALUE | FUNCTION DESCRIPTION |
| 0x00 | L | Reserved | R | 0x01 | Reserved |
| | H | Reserved | R | 0x01 | Reserved |
| 0x01 | L | Reserved | R | 0x00 | Reserved |
| | H | Reserved | R | 0x00 | Reserved |
| 0x02 | L | Reserved | R | 0x00 | Reserved |
| | H | Reserved | R | 0x00 | Reserved |
| 0x03 | L | PS_CONF1 | R / W | 0x01 | PS duty ratio, integration time, persistence, and PS enable / disable |
| | H | PS_CONF2 | R / W | 0x00 | PS gain, PS output resolution selection, PS interrupt trigger method |
| 0x04 | L | PS_CONF3 | R / W | 0x00 | PS smart persistence, active force mode, LED select |
| | H | PS_MS | R / W | 0x00 | LED current selection |
| 0x05 | L | PS_CANC_L | R / W | 0x00 | PS cancellation level setting |
| | H | PS_CANC_M | R / W | 0x00 | PS cancellation level setting |
| 0x06 | L | PS_THDL_L | R / W | 0x00 | PS low interrupt threshold setting LSB byte |
| | H | PS_THDL_M | R / W | 0x00 | PS low interrupt threshold setting MSB byte |
| 0x07 | L | PS_THDH_L | R / W | 0x00 | PS high interrupt threshold setting LSB byte |
| | H | PS_THDH_M | R / W | 0x00 | PS high interrupt threshold setting MSB byte |
| 0x08 | L | PS1_Data_L | R | 0x00 | PS1 LSB output data |
| | H | PS1_Data_M | R | 0x00 | PS1 MSB output data |
| 0x09 | L | PS2_Data_L | R | 0x00 | PS2 LSB output data |
| | H | PS2_Data_M | R | 0x00 | PS2 MSB output data |
| 0x0A | L | PS3_Data_L | R | 0x00 | PS3 LSB output data |
| | H | PS3_Data_M | R | 0x00 | PS3 MSB output data |
| 0x0B | L | Reserved | R | 0x00 | Reserved |
| | H | Reserved | R | 0x00 | Reserved |
| 0x0C | L | Reserved | R | 0x00 | Reserved |
| | H | Reserved | R | 0x00 | Reserved |
| 0x0D | L | Reserved | R | 0x00 | Reserved |
| | H | INT_Flag | R | 0x00 | PS interrupt flags |
| 0x0E | L | ID_L | R | 0x80 | Device ID LSB |
| | H | ID_M | R | 0x00 | Device address 0x41 |

Note

- All of reserved register are used for internal test. Please keep as default setting

**Command Register Format**

VCNL3036 provides an 8-bit command register for PS controlling independently. The description of each command format is shown in following tables.

TABLE 2 - REGISTER: RESERVED

| REGISTER NAME | | COMMAND CODE: 0x00_L (0x00 DATA BYTE LOW) |
|---------------|-------|---|
| Command | Bit | Description |
| Reserved | 7 : 0 | Default = 01H |

TABLE 3 - REGISTER: RESERVED

| REGISTER NAME | | COMMAND CODE: 0x00_H (0x00 DATA BYTE HIGH) |
|---------------|-------|--|
| Command | Bit | Description |
| Reserved | 7 : 0 | Default = 01H |

TABLE 4 - REGISTER RESERVED

| REGISTER NAME | | COMMAND CODE: 0x01_L (0x01 DATA BYTE LOW) AND 0x01_H (0x01 DATA BYTE HIGH) |
|---------------|-------|--|
| Register | Bit | Description |
| Reserved | 7 : 0 | Reserved |

TABLE 5 - REGISTER: RESERVED

| REGISTER NAME | | COMMAND CODE: 0x02_L (0x02 DATA BYTE LOW) AND 0x02_H (0x02 DATA BYTE HIGH) |
|---------------|-------|--|
| Register | Bit | Description |
| Reserved | 7 : 0 | Reserved |

TABLE 6 - REGISTER: PS_CONF1 DESCRIPTION

| REGISTER: PS_CONF1 | | COMMAND CODE: 0x03_L (0x03 DATA BYTE LOW) |
|--------------------|-------|--|
| Command | Bit | Description |
| PS_Duty | 7 : 6 | (0 : 0) = 1/40, (0 : 1) = 1/80, (1 : 0) = 1/160, (1 : 1) = 1/320 PS LED on / off duty ratio setting |
| PS_PERS | 5 : 4 | (0 : 0) = 1, (0 : 1) = 2, (1 : 0) = 3, (1 : 1) = 4 PS interrupt persistence setting |
| PS_IT | 3 : 1 | (0 : 0 : 0) = 1T, (0 : 0 : 1) = 1.5T, (0 : 1 : 0) = 2T, (0 : 1 : 1) = 2.5T, (1 : 0 : 0) = 3T, (1 : 0 : 1) = 3.5T, (1 : 1 : 0) = 4T, (1 : 1 : 1) = 8T, PS integration time setting |
| PS_SD | 0 | 0 = PS power on, 1 = PS shut down, default = 1 |

TABLE 7 - REGISTER: PS_CONF2 DESCRIPTION

| REGISTER: PS_CONF2 | | COMMAND CODE: 0x03_H (0x03 DATA BYTE HIGH) |
|--------------------|-------|--|
| Command | Bit | Description |
| MPX_INT_EN | 7 | 0 = disabled, 1 = enabled |
| MPX_MODE | 6 | 0 = disabled, 1 = enabled |
| PS_Gain | 5 : 4 | (0 : 0) and (0 : 1) = two step mode, (1 : 0) single mode x 8, (1 : 1) single mode x 1 |
| PS_HD | 3 | 0 = PS output is 12 bits, 1 = PS output is 16 bits |
| PS_NS | 2 | (0 : 0) and (0 : 1) = two step mode, (1 : 0) single mode x 8, (1 : 1) single mode x 1 |
| PS_INT | 1 : 0 | (0 : 0) = interrupt disable, (0 : 1) = trigger by closing, (1 : 0) = trigger by away, (1 : 1) = trigger by closing and away |

**TABLE 8 - REGISTER: PS_CONF3 DESCRIPTION**

| REGISTER: PS_CONF3 | | COMMAND CODE: 0x04_L (0x04 DATA BYTE LOW) |
|--------------------|-------|---|
| Command | Bit | Description |
| LED_I_LOW | 7 | 0 = disabled = normal current, 1 = enabled = 1/10 of normal current, with that the current is accordingly: 5 mA, 7.5 mA, 10 mA, 12 mA, 14 mA, 16 mA, 18 mA, 20 mA |
| LED select | 6 : 5 | (0 : 0) = LED1, (0 : 1) = LED2, (1 : 0) = LED3, (1 : 1) = LED3 |
| PS_SMART_PERS | 4 | 0 = disable; 1 = enable PS smart persistence |
| PS_AF | 3 | 0 = active force mode disable (normal mode), 1 = active force mode enable |
| PS_TRIG | 2 | 0 = no PS active force mode trigger, 1 = trigger one time cycle VCNL3036 output one cycle data every time host writes in '1' to sensor. The state returns to '0' automatically. |
| PS_MS | 1 | 0 = proximity normal operation with interrupt function 1 = proximity detection logic output mode enable |
| PS_SC_EN | 0 | 0 = turn off sunlight cancel; 1 = turn on sunlight cancel PS sunlight cancel function enable setting |

TABLE 9 - REGISTER: PS_MS DESCRIPTION

| REGISTER: PS_MS | | COMMAND CODE: 0x04_H (0x04 DATA BYTE HIGH) |
|-----------------|-------|---|
| Command | Bit | Description |
| Reserved | 7 | 0 |
| PS_SC_CUR | 6 : 5 | (0 : 0) = 1 x typical sunlight cancel current, (0 : 1) = 2 x typical sunlight cancel current, (1 : 0) = 4 x typical sunlight cancel current, (1 : 1) = 8 x typical sunlight cancel current |
| PS_SP | 4 | 0 = typical sunlight capability, 1 = 1.5 x typical sunlight capability |
| PS_SPO | 3 | 0 = output is 00h in sunlight protect mode, 1 = output is FFh in sunlight protect mode, |
| LED_I | 2 : 0 | (0 : 0 : 0) = 50 mA; (0 : 0 : 1) = 75 mA; (0 : 1 : 0) = 100 mA; (0 : 1 : 1) = 120 mA (1 : 0 : 0) = 140 mA; (1 : 0 : 1) = 160 mA; (1 : 1 : 0) = 180 mA; (1 : 1 : 1) = 200 mA LED current selection setting |

TABLE 10 - REGISTER PS_CANC_L AND PS_CANC_M DESCRIPTION

| | | COMMAND CODE: 0x05_L (0x05 DATA BYTE LOW) AND 0x05_H (0x05 DATA BYTE HIGH) |
|-----------|-------|--|
| Register | Bit | Description |
| PS_CANC_L | 7 : 0 | 0x00 to 0xFF, PS cancellation level setting_LSB byte |
| PS_CANC_M | 7 : 0 | 0x00 to 0xFF, PS cancellation level setting_MSB byte |

TABLE 11 - REGISTER: PS_THDL_L AND PS_THDL_M DESCRIPTION

| | | COMMAND CODE: 0x06_L (0x06 DATA BYTE LOW) AND 0x06_H (0x06 DATA BYTE HIGH) |
|-----------|-------|--|
| Register | Bit | Description |
| PS_THDL_L | 7 : 0 | 0x00 to 0xFF, PS interrupt low threshold setting_LSB byte |
| PS_THDL_M | 7 : 0 | 0x00 to 0xFF, PS interrupt low threshold setting_MSB byte |

TABLE 12 - REGISTER: PS_THDH_L AND PS_THDH_M DESCRIPTION

| | | COMMAND CODE: 0x07_L (0x07 DATA BYTE LOW) AND 0x07_H (0x07 DATA BYTE HIGH) |
|-----------|-------|--|
| Register | Bit | Description |
| PS_THDH_L | 7 : 0 | 0x00 to 0xFF, PS interrupt high threshold setting_LSB byte |
| PS_THDH_M | 7 : 0 | 0x00 to 0xFF, PS interrupt high threshold setting_MSB byte |

**TABLE 13 - READ OUT REGISTER DESCRIPTION**

| Register | Command Code | Bit | Description |
|------------|------------------------------|-------|---|
| PS1_Data_L | 0x08_L (0x08 data byte low) | 7 : 0 | 0x00 to 0xFF, PS1 LSB output data |
| PS1_Data_M | 0x08_H (0x08 data byte high) | 7 : 0 | 0x00 to 0xFF, PS1 MSB output data |
| PS2_Data_L | 0x09_L (0x09 data byte low) | 7 : 0 | 0x00 to 0xFF, PS2 LSB output data |
| PS2_Data_M | 0x09_H (0x09 data byte high) | 7 : 0 | 0x00 to 0xFF, PS2 MSB output data |
| PS3_Data_L | 0x0A_L (0x0A data byte low) | 7 : 0 | 0x00 to 0xFF, PS3 LSB output data |
| PS3_Data_M | 0x0A_H (0x0A data byte high) | 7 : 0 | 0x00 to 0xFF, PS3 MSB output data |
| Reserved | 0x0B_L (0x0B data byte low) | 7 : 0 | Reserved |
| Reserved | 0x0B_H (0x0B data byte high) | 7 : 0 | Reserved |
| Reserved | 0x0C_L (0x0C data byte low) | 7 : 0 | Reserved |
| Reserved | 0x0C_H (0x0C data byte high) | 7 : 0 | Reserved |
| Reserved | 0x0D_L (0x0D data byte low) | 7 : 0 | Default = 0x00 |
| INT_Flag | 0x0D_H (0x0D data byte high) | 7 | MPX_DATA_READY_FLAG |
| | | 6 | PS_SPFLAG, PS entering protection mode |
| | | 5 : 2 | Reserved |
| | | 1 | PS_IF_CLOSE, PS rises above PS_THDH INT trigger event |
| | | 0 | PS_IF_AWAY, PS drops below PS_THDL INT trigger event |
| ID_L | 0x0E_H (0x0E data byte low) | 7 : 0 | 0x80 |
| ID_M | 0x0E_H (0x0E data byte high) | 7 : 6 | (0 : 0) |
| | | 5 : 4 | (0 : 0) Slave address = 0x41 (7-bit) |
| | | 3 : 0 | Version code (0 : 0 : 0 : 0) |

Adjustable Sampling Time

VCNL3036's embedded LED driver drives up to 3 external LEDs by a pulsed duty cycle. The LED on / off duty ratio is programmable by I²C command at register: PS_Duty which is related to the current consumption and PS response time. The higher the duty ratio adopted, the faster response time achieved with higher power consumption. For example, PS_Duty = 1/320, peak LED current = 100 mA, averaged current consumption is 100 mA/320 = 0.3125 mA.

Initialization

VCNL3036 includes default values for each register. As long as power is on, it is ready to be controlled by host via I²C bus.

Threshold Window Setting

- Programmable PS Threshold

VCNL3036 provides both high and low thresholds for PS (register: PS_THDL, PS_THDH)

- PS Persistence

The PS persistence function (PS_PERS, 1, 2, 3, 4) helps to avoid false trigger of the PS INT. For example, if PS_PERS = 3 times, the PS INT will not be asserted unless the PS value is greater than the PS threshold (PS_THDH) value for three periods of time continuously

- PS Active Force Mode

An extreme power saving way to use PS is to apply PS active force (register: PS_CONF3 command: PS_FOR = 1) mode. Anytime host would like to read out just one of PS data, write in '1' at register: PS_CONF3 command: PS_FOR_Trig. Without commands placed, there is no PS data output. VCNL3036 stays in standby mode constantly

Intelligent Cancellation

VCNL3036 provides an intelligent cancellation method to reduce cross talk phenomenon for the proximity sensor. The output data will be subtracted by the input value on register: PS_CANC.



Interruption (INT)

VCNL3036 has PS interrupt feature operated by a single pin “INT”. The purpose of the interrupt feature is to actively inform the host once INT has been asserted. With the interrupt function applied, the host does not need to be constantly pulling data from the sensor, but to read data from the sensor while receiving interrupt request from the sensor. As long as the host enables PS interrupt (register: PS_INT) function, the level of INT pin (pin 7) is pulled low once INT asserted. All registers are accessible even if INT is asserted.

To effectively adopt PS INT function, it is recommended to use PS detection mechanism at register: PS_INTT = 1 for the best PS detection performance which can be adjusted by high / low THD level of PS. PS INT trigger way is defined by register: PS_INT.

Interruption Flag

Register: INT_Flag represents all of interrupt trigger status for PS. Any flag value changes from “0” to “1” state, the level of INT pin will be pulled low. As long as host reads INT_Flag data, the bit will change from “1” state to “0” state after reading out, the INT level will be returned to high afterwards.

PROXIMITY DETECTION LOGIC OUTPUT MODE

VCNL3036 provides a proximity detection logic output mode that uses INT pin (pin 7) as a proximity detection logic high / low output (register: PS_MS). When this mode is selected, the PS output (pin 7; INT/P_{out}) is pulled low when an object is closing to be detected and returned to level high when the object moves away. Register: PS_THDH / PS_THDL defines how sensitive PS detection is.

One thing to be stated is that whenever proximity detection logic mode applied, INT pin is only used as a logic high / low output. Meanwhile, host has to simulate the GPIO pin as an INT pin function. If not, host needs to periodically reading the state of INT at this GPIO pin.

PROXIMITY DETECTION HYSTERESIS

A PS detection hysteresis is important that keeps PS state in a certain range of detection distance. For example, PS INT asserts when PS value over PS_THDH. Host switches off panel backlight and then clears INT. When PS value is less than PS_THDL, host switches on panel backlight. Any PS value lower than PS_THDH or higher than PS_THDL, PS INT will not be asserted. Host does keep the same state.

MULTIPLEX FEATURE WITH VCNL3036

VCNL3036 allows to connect up to 3 external LEDs. Each may be selected separate to allow for normal proximity.

If one select e.g. LED2 then also PS2 delivers the corresponding proximity data. To allow for a fast quasi-parallel measurements of all three channels the MPX_MODE may be activated (set to “1”).

Within “PS_FORCE_MODE” all three LEDs will be sequentially switched and available proximity result of this directly shown within the three PS_DATA register.

Beside MPX_MODE enabled and PS_FORCE_MODE set this sequence starts direct after setting the PS_TRIG bit. Availability of the data will be indicated with setting the MPX_DATA_READY flag or also the Interrupt if this is set-up also. Please see below diagram.

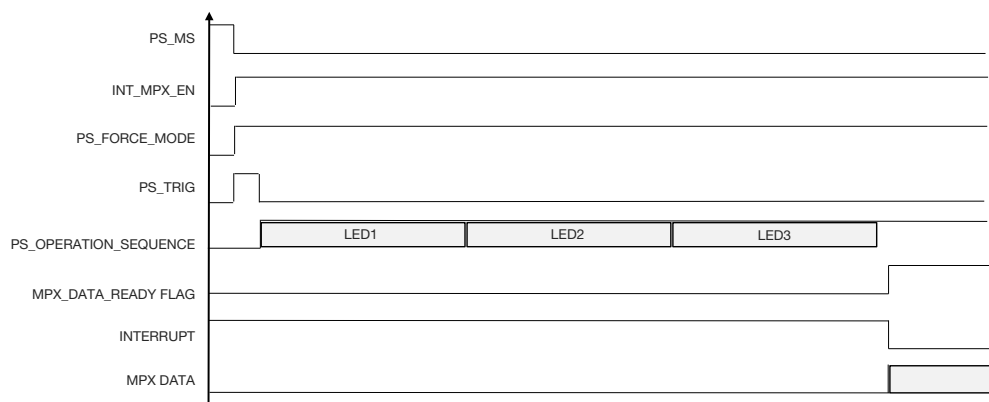


Fig. 8 - VCNL3036 MPX Mode Sequence



APPLICATION CIRCUIT BLOCK REFERENCE

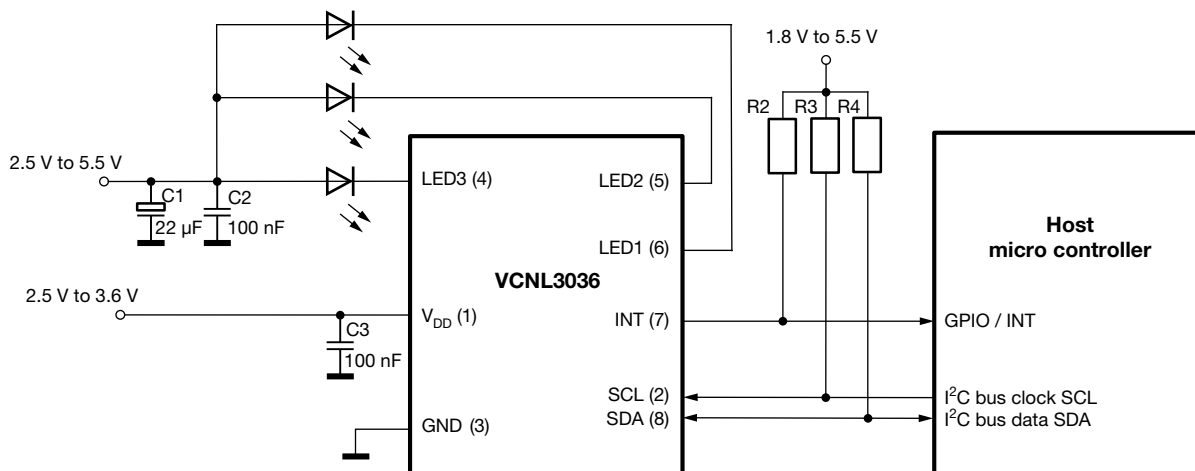


Fig. 9 - Circuitry with Two Separate Power Supply Sources

Three additional capacitors in the circuit are proposed for the following purposes: (1) the 100 nF capacitor near the V_{DD} pin is used for power supply noise rejection, (2) the 22 μF plus parallel 100 nF capacitors - connected to the common anode of the external IREDs / LEDs - are used to prevent the LED voltage from instantly dropping when an LED is switched on, and (3) 2.2 kΩ to 4.7 kΩ are recommended values for the pull up resistor of I²C. The value of the pull-up resistor at the INT line could be 10 kΩ applied on the INT pin.

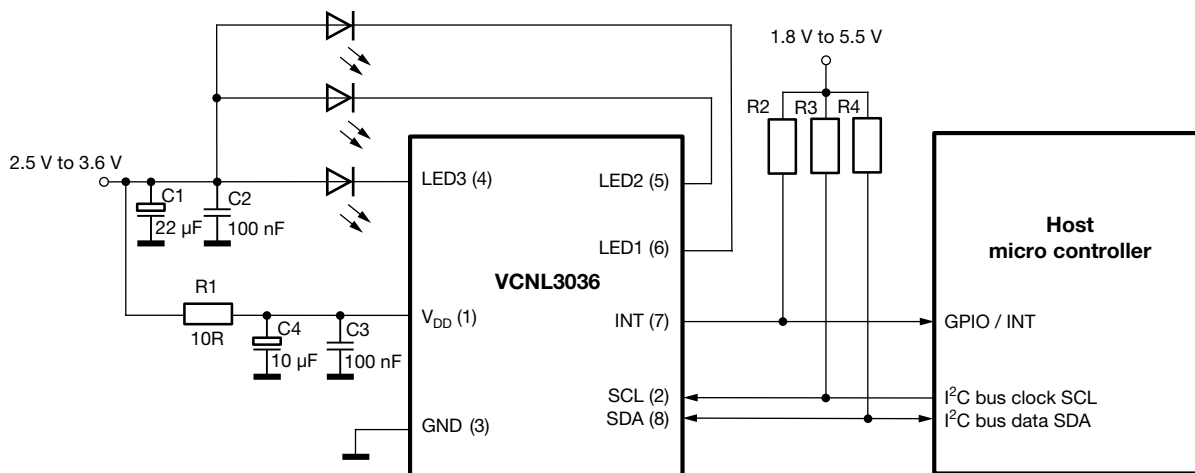


Fig. 10 - Circuitry with just One Common Power Supply Source

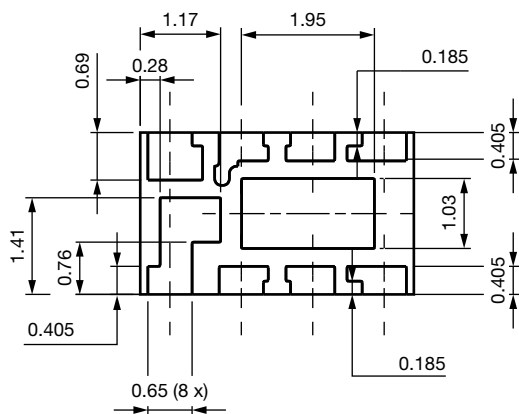
For high currents of the LEDs and / or power supply close to the lower limit of 2.5 V this R-C decoupling will prevent that the V_{DD} voltage drop below specified minimum.

LEDs / IREDs between 550 nm (green) and 950 nm (IR) fit to the sensitivity of the proximity photodiode.

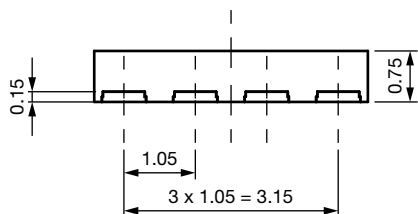
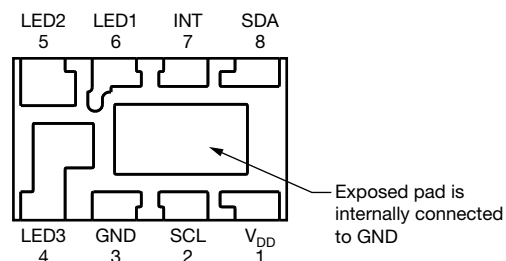
Mechanical placement of the external IRED depends on the application. Please study also the AN: designing VCNL3036 into an application



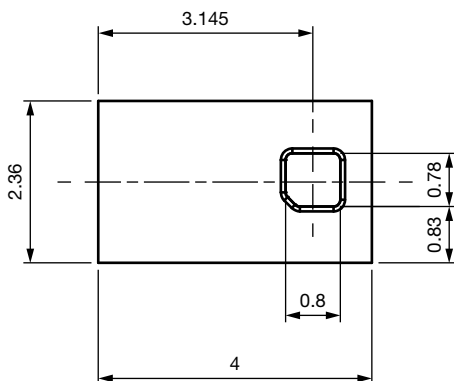
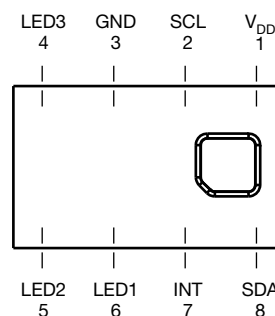
PACKAGE DIMENSIONS in millimeters



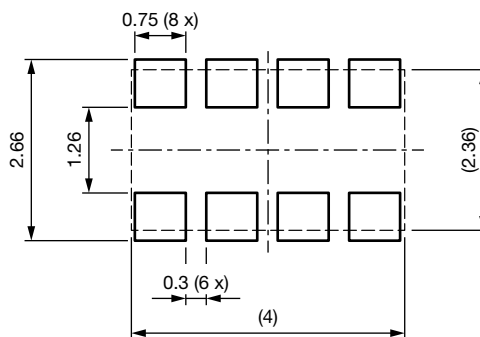
Pinning bottom view



Pinning top view

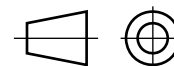
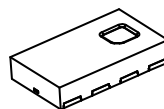


Recommended solder foot print



Drawing No.: 6.550-5331.01-4
Issue: 1; 21.02.2017

Not indicated tolerances ± 0.1 mm



Technical drawings according to DIN specification.

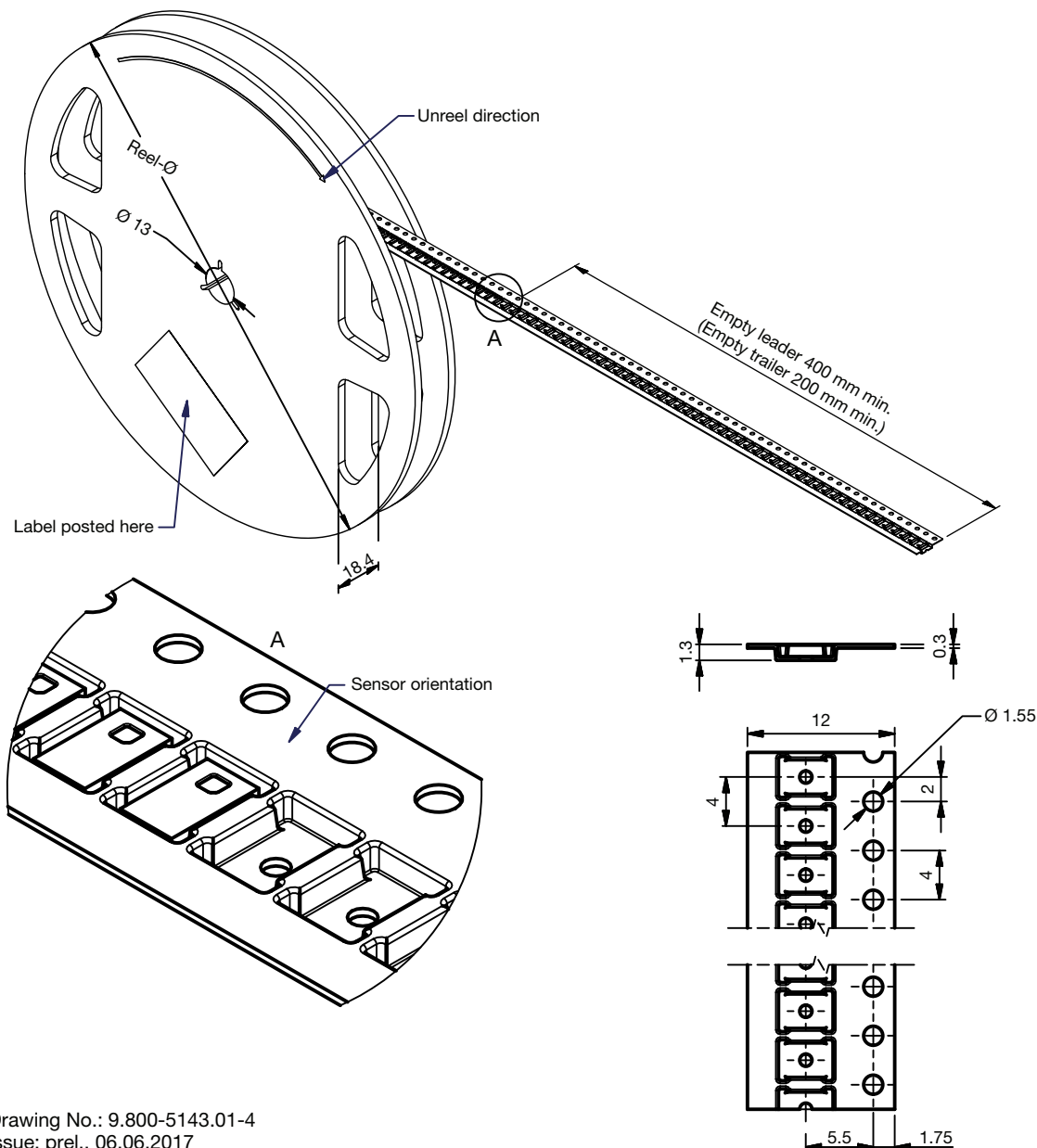


TAPE AND REEL DIMENSIONS in millimeters

Reel-size:
 GS 08: \varnothing 180 mm \pm 2 mm = 3300 pcs.
 GS 18: \varnothing 330 mm \pm 2 mm = 13 000 pcs.

Non tolerated dimensions \pm 0.1 mm

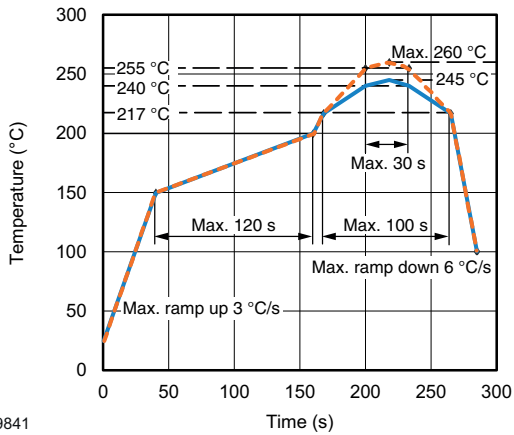
Reel-design is representative for different types.



Drawing No.: 9.800-5143.01-4
 Issue: prel., 06.06.2017



SOLDER PROFILE



19841

Fig. 11 - Lead (Pb)-free Reflow Solder Profile according to J-STD-020

DRYPACK

Devices are packed in moisture barrier bags (MBB) to prevent the products from moisture absorption during transportation and storage. Each bag contains a desiccant.

FLOOR LIFE

Floor life (time between soldering and removing from MBB) must not exceed the time indicated on MBB label:

Floor life: 168 h

Conditions: $T_{amb} < 30\text{ }^{\circ}\text{C}$, $RH < 60\%$

Moisture sensitivity level 3, according to J-STD-020.

DRYING

In case of moisture absorption devices should be baked before soldering. Conditions see J-STD-020 or label. Devices taped on reel dry using recommended conditions 192 h at $40\text{ }^{\circ}\text{C}$ ($+ 5\text{ }^{\circ}\text{C}$), $RH < 5\%$.



Disclaimer

ALL PRODUCT, PRODUCT SPECIFICATIONS AND DATA ARE SUBJECT TO CHANGE WITHOUT NOTICE TO IMPROVE RELIABILITY, FUNCTION OR DESIGN OR OTHERWISE.

Vishay Intertechnology, Inc., its affiliates, agents, and employees, and all persons acting on its or their behalf (collectively, "Vishay"), disclaim any and all liability for any errors, inaccuracies or incompleteness contained in any datasheet or in any other disclosure relating to any product.

Vishay makes no warranty, representation or guarantee regarding the suitability of the products for any particular purpose or the continuing production of any product. To the maximum extent permitted by applicable law, Vishay disclaims (i) any and all liability arising out of the application or use of any product, (ii) any and all liability, including without limitation special, consequential or incidental damages, and (iii) any and all implied warranties, including warranties of fitness for particular purpose, non-infringement and merchantability.

Statements regarding the suitability of products for certain types of applications are based on Vishay's knowledge of typical requirements that are often placed on Vishay products in generic applications. Such statements are not binding statements about the suitability of products for a particular application. It is the customer's responsibility to validate that a particular product with the properties described in the product specification is suitable for use in a particular application. Parameters provided in datasheets and / or specifications may vary in different applications and performance may vary over time. All operating parameters, including typical parameters, must be validated for each customer application by the customer's technical experts. Product specifications do not expand or otherwise modify Vishay's terms and conditions of purchase, including but not limited to the warranty expressed therein.

Hyperlinks included in this datasheet may direct users to third-party websites. These links are provided as a convenience and for informational purposes only. Inclusion of these hyperlinks does not constitute an endorsement or an approval by Vishay of any of the products, services or opinions of the corporation, organization or individual associated with the third-party website. Vishay disclaims any and all liability and bears no responsibility for the accuracy, legality or content of the third-party website or for that of subsequent links.

Except as expressly indicated in writing, Vishay products are not designed for use in medical, life-saving, or life-sustaining applications or for any other application in which the failure of the Vishay product could result in personal injury or death. Customers using or selling Vishay products not expressly indicated for use in such applications do so at their own risk. Please contact authorized Vishay personnel to obtain written terms and conditions regarding products designed for such applications.

No license, express or implied, by estoppel or otherwise, to any intellectual property rights is granted by this document or by any conduct of Vishay. Product names and markings noted herein may be trademarks of their respective owners.