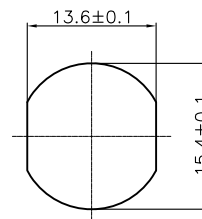
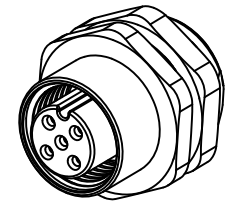


section A-A



PG9 Recommended  
Panel CUT-Out  
Thickness:4.0mm



Specifications:  
 Current Rating:5A AC/DC  
 Voltage Rating:60V AC/DC  
 Contact Resistance:5m ohm. Max.  
 Insulation Resistance:100M ohm. Min.  
 Withstanding Voltage:500V AC/Minute  
 Waterproof rate:IP68  
 Operating Temperature Range:-40°C ~ +100°C  
 Material and Finish  
 See Table

PIN ASSIGNMENTS FRONT VIEW

A CODING	3Pin	4Pin	5Pin	8Pin	12Pin

ITEM	DESCRIPTION	MATERIAL	REMARK	Q'TY
1	Insulator	Nylon	UL94V-0 Black	1
2	Terminal	Copper Alloy	Gold Plated 3u"	3~8
3	Shell	Copper Alloy	Nickel Plated 60u"	1
4	Seal ring	Silica Gel	Red	2
5	Nut	Copper Alloy	PG9 Nickel Plated 60u"	1

RoHS Compliant

				DRAWN:	GENERAL TOLERANCE: .X=±0.30 .XX=±0.2	<h1 style="color: red;">CnC Tech</h1> <p>Industrial Cable and Connector Technology</p>	
				CHECKED:			UNIT: MM
				APPROVAL:	SCALE: 1:1	PART NO: <b>11072F-XX-2-1-1</b>	<b>A4</b>
REV	DATE	FILE	BY		SHEET: 1 / 1		
					PROJECTION:		