

5

4

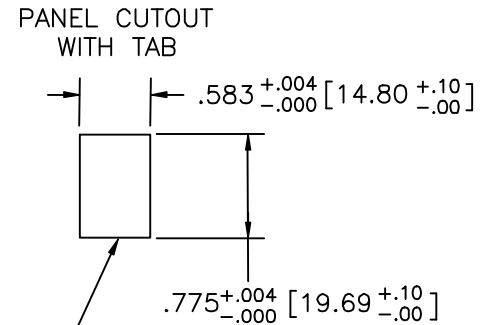
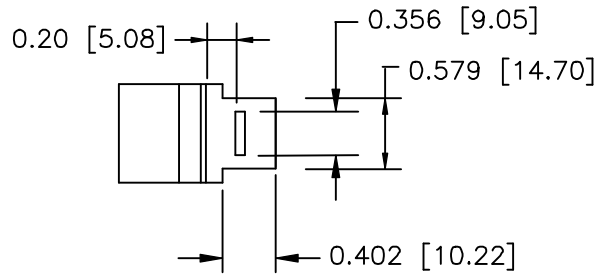
3

2

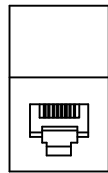
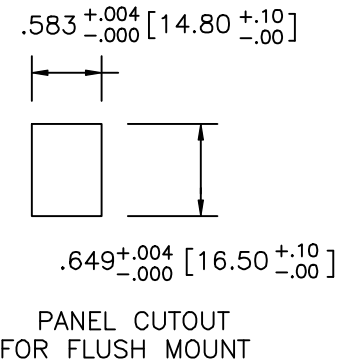
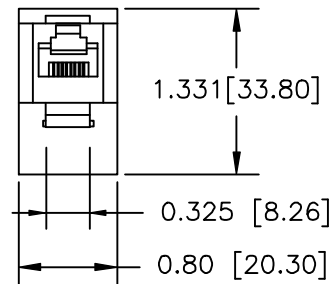
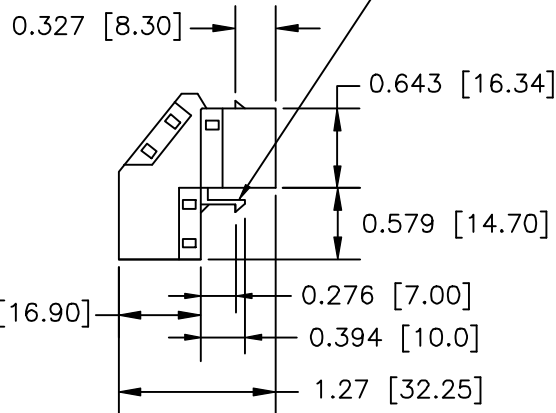
1

DWG NO. M1026KS-8C-C5R

REV	ECO NO.	DATE	BY	APP'D
A	REL TO PRODUCTION PER ECO 001	5/3/05	KL	



Tolerance	
.xxx	±.005" (0.12)
.xx	±.012" (0.30)



BOTTOM OF TAB

THIS DEVICE RoHS COMPLIANT

ELECTRICAL:

- Current rating: 1.5 AMP Max.
- Contact resistance: 20 milliohms Max.
- Insulation resistance: 500 megohms Min.
- Dielectric withstanding voltage: 1000 V Min.
- DC resistance: 0.1 Ohms

MATERIAL:

- Housing: ABS UL94V0
- Contact: Phosphor Bronze
- Plating: 50µ Gold over nickel
- Shield: Nickel over Bronze
- Operating temperature: -40°C to 70°C
- Color: Black

UNIT: inch [mm]

CONFIDENTIAL



© Copyright 2005 Regal Electronics, Inc. This drawing is the property of Regal Electronics and contains confidential information, trade secret information and/or know-how which is the property of Regal Electronics. By accepting this drawing, the recipient agrees not to provide, or otherwise make available, the drawing or any information or know-how embodied therein, to any third party without prior written authorization.

DRAWN: KIM	DATE: 5/3/05
CHECKED:	DATE:
ENGINEER:	DATE:
APPROVED:	DATE:
APPROVED:	DATE:
APPROVED:	DATE:

TITLE: CAT5
IN LINE COUPLER
SHIELD/W TABS

SIZE: B	DRAWING NO.: M1026KS-8C-C5R	REV: A
SCALE: NONE	SHEET 1 of 1	

5

4

3

2

1

C-M1026KS-8C-C5R

A