

**Mechanical characteristics**

cables  
  
interface dimensions acc. to assembly code  
center conductor  
outer conductor  
mating life

**Components**

center contact  
outer contact  
other metal parts  
insulator  
gasket

**Electrical characteristics**

impedance  
frequency  
return loss  
intermodulation  
working voltage  
voltage proof  
insulation resistance  
contact resistance  
center contact  
outer contact

**Environmental**

operating temp.  
mating face sealing (plugged)  
RoHS compliant

**Mechanische Eigenschaften**

Kabel  
  
Steckgesicht nach Montageanleitung  
Innenleiter  
Außenleiter  
Steckzyklen

**Bauteile**

Innenkontakt  
Außenkontakt  
sonstige Metallteile  
Isolierung  
Dichtung

**Elektrische Eigenschaften**

Wellenwiderstand  
Frequenz  
Rückflussdämpfung  
Intermodulation  
Betriebsspannung  
Prüfspannung  
Isolationswiderstand  
Durchgangswiderstand  
Innenkontakt  
Außenkontakt

**Umgebung**

Betriebstemperatur  
Querdichtigkeit (gesteckt)  
RoHS konform

cable group / Kabelgruppe G10 (UT-141):  
1673A BELDEN, EZ 141 SUHNER, RG-402/U,  
Flexiform 402 NM Habia Cable,  
SUCOFORM 141 SUHNER, UT-141 MICRO-COAX

2.2-5  
A24  
solder /löt  
solder / löt  
>100

**Materials / Material**

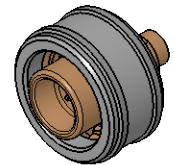
CuZn39Pb3  
CuZn39Pb3  
CuZn39Pb3  
PTFE  
silicone /Silikon


**Finish / Oberfläche**

Cu2Ag5  
Cu2Ag3  
CuSnZn3

50 Ω  
0-6 GHz  
typ.: 1GHz-36dB; 4GHz-30dB; 6GHz-25dB  
<-160 dBc 2x20W  
≤ 1 kV<sub>eff</sub> / 50 Hz  
1,5 kV<sub>eff</sub> / 50 Hz  
≥ 1 GΩ

M 1:1



|   |                               |             |              |   |             |                            |                     |                      |  |  |  |
|---|-------------------------------|-------------|--------------|---|-------------|----------------------------|---------------------|----------------------|--|--|--|
| Änd./ rev. index                                  | Änderungs-Nr. / revision code | Datum/ date | Name/ name   |   | Datum/ date | Name/ name                 | Gewicht/ weight [g] |                      |  |  |  |
|   |                               |             | gez./ drawn  | 01.03.2018  | KL          |                            |                     |                      |  |  |  |
|   |                               |             | gepr./ appr. | 07.03.2018  | HB          | ca./approx.                | 16,9                |                      |  |  |  |
| Maßstab/ scale                                    |                               |             |              | Benennung/ title  |             |                            |                     |                      |  |  |  |
| 2:1 (1:1)   |                               |             |              | 2.2-5 Straight Plug, Push Pull<br>2.2-5 Kabelstecker, Push Pull                       |             |                            |                     |                      |  |  |  |
| untol. Maße/ dim. without tolerances according to |                               |             |              | Untert./ doc. type  |             | Zeichnungsnr./ drawing no. |                     |                      |  |  |  |
|   |                               |             |              | K   |             | J01460A3003                |                     |                      |  |  |  |
|   |                               |             |              | Ersatz für/ replaces  |             |                            |                     |                      |  |  |  |
|   |                               |             |              |  |             |                            |                     |                      |  |  |  |
|   |                               |             |              |   |             |                            |                     | Maße/ dimensions: mm |  |  |  |
|   |                               |             |              |   |             |                            |                     | Original : DIN A4    |  |  |  |
|   |                               |             |              | Blatt/ sheet 1 von/ of 1  |             |                            |                     |                      |  |  |  |